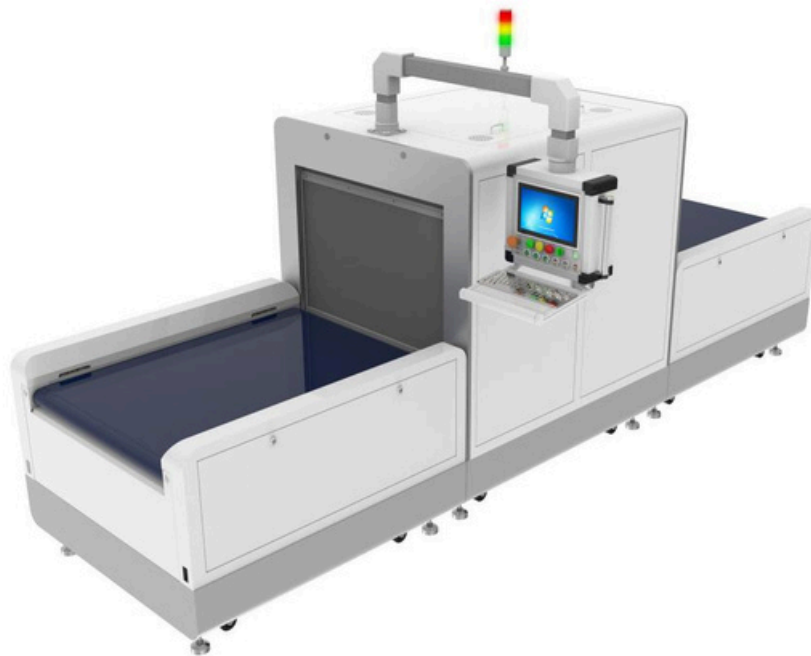


Conveyor Tunnel System For Retail



Introduction

Conveyer Tunnel System For Retail is an UHF RFID conveyor belt reader developed and designed by Acube Infotech. With RFID technology as the core, combined with mechanical design, automation, multiple sensors, electromagnetic shielding and other methods, it solves the problems of high error rate and low efficiency of the traditional manual counting method during counting, incoming and outgoing goods review and other operations. At the same time, when the channel machine is working, the list is generated on the display screen in real time, the data is verified, and the corresponding prompt and alarm are made to facilitate the management personnel to check, which greatly saves the labor cost and improves the work efficiency.

Industry application: it is mainly used in the identification of single grade items in the market, such as warehousing management and product inventory in clothing, leather goods, luggage, wine, electric power and other industries.

Features

1. Fast recognition speed, can identify more than 400 items within 3 seconds, and can generate a list on the display screen in real time;
2. Professional motion control and mechanical design technology can fully solve the problem of label missed reading;
3. Strict electromagnetic shielding design and radio frequency optimization can eliminate the harm of radio frequency radiation to the human body and ensure the accuracy of label reading;
4. The industrial computer software can control the functions of the whole machine and monitor the running status of all equipment. The external mechanical buttons are also equipped to facilitate the operator to control the working status of the equipment at any time;
5. The design of industrial plastic mesh port conveyor line fully solves the problem of offset maintenance of the conveyor line body;
6. There are overhaul doors on both sides of the passage to facilitate equipment maintenance;
7. Support the expansion of abnormal sorting modules to meet the needs of different users and support customers in the secondary development of application software;
8. The inventory efficiency has been increased by more than 100 times. The original manual inventory work requires 5-10 minutes, and the small conveyor belt inventory channel machine inventory only takes 3-5 seconds.

Technical Specification

Main Specifications	
Model	Cykeo-TP2
Performance Specifications	
OS	Windows (optional for Android)
Industrial Personal Computer	I5, 4G+128 (RK3399, 4G+16G)
Identification technology	RFID (UHF)
Reading Speed	100pcs/s
Transmission speed	The default is 20m / min, and the maximum can be adjusted to 30m / min
Maximum load	80kg
Reading speed	6-10 box/min
Conveyor belt	3 independent part
Door opening speed	1.2s
UHF RFID	
Frequency range	840MHz-960MHz
Protocol	ISO 18000-6C (EPC C1 G2)
RFID Chip	Impinj R2000
RFID frequency mode	Fixed frequency / frequency hopping
Output power	33dbm±1dBm
Tag reading quantity	≥800 pcs
Read rate	3~5s
Read mode	Static
Working mode	Cycle / trigger
Physical Specifications	
Material	1.2mm thick carbon steel
Screen	10" touch screen
Dimension	1025mm*1554mm*3965mm(W*H*D)
Internal space	785mm*592mm*1365mm(W*H*D)
Conveyor dimension	1025mm*750mm*1300mm(W*H*D)
Carton dimension	785mm*592mm*1065mm

Power supply

Working power	Maximum power 250W, standby power 120W
working voltage	AC 220V

Operating environment

Storage temperature	-20 °C — 60°C
Working temperature	-20°C — 60°C

Dimension

